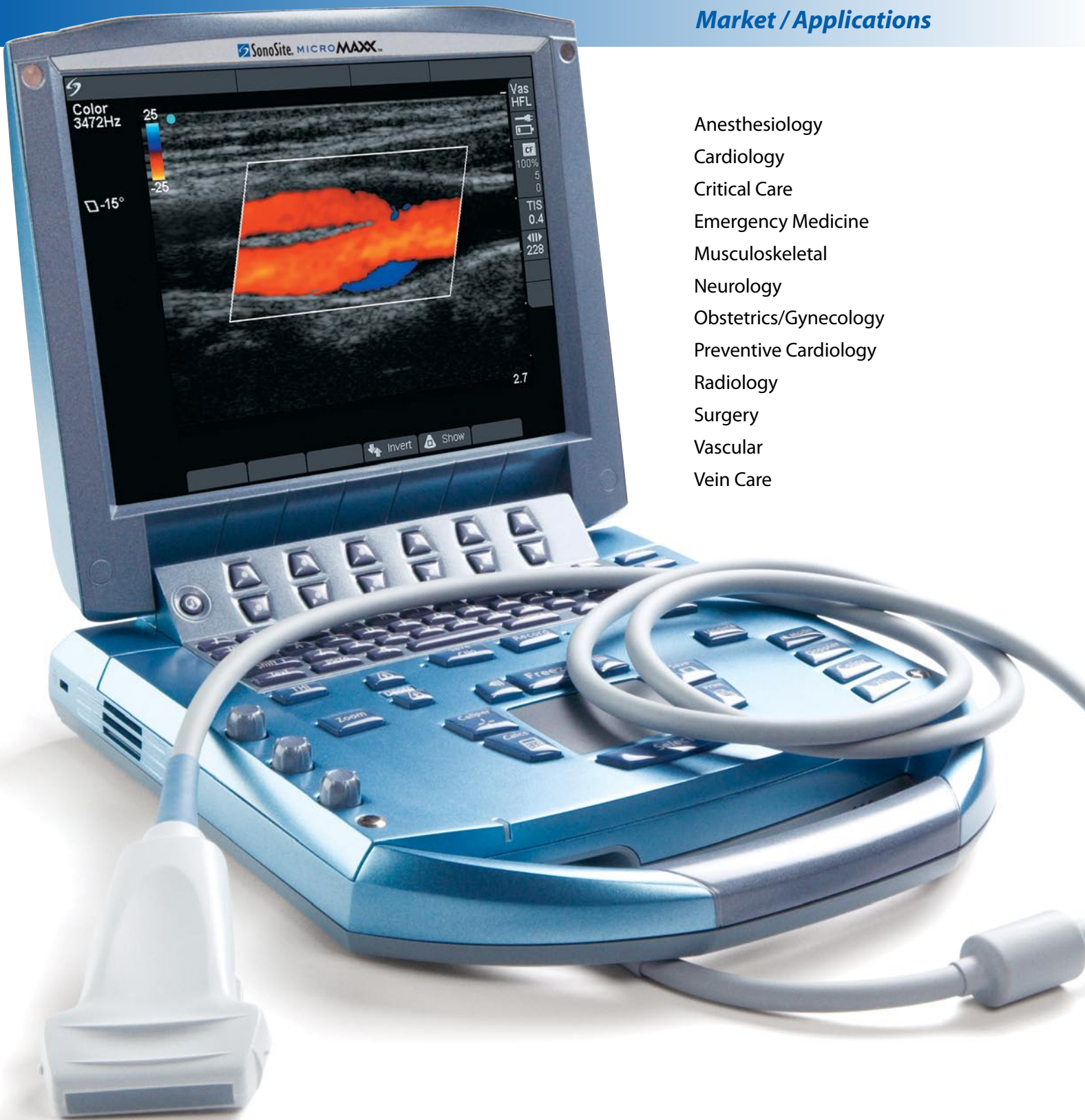


Market / Applications



- Anesthesiology
- Cardiology
- Critical Care
- Emergency Medicine
- Musculoskeletal
- Neurology
- Obstetrics/Gynecology
- Preventive Cardiology
- Radiology
- Surgery
- Vascular
- Vein Care

MicroMaxx® System Specifications

System Specifications:

| | |
|---------------------------|---|
| Weight | 7.7 lb (3.5 kg) |
| Dimensions | 11.8" L x 10.8" W x 3.1" H (30.2 cm L x 27.7 cm W x 8.0 cm H) |
| Display | 10.4" (26.4 cm) diagonal LCD (NTSC or PAL) |
| Architecture | All-digital broadband |
| Number of channels | 128 channels |
| Dynamic range | Up to 165 dB |
| Gray scale | 256 shades |
| HIPAA compliance | Comprehensive tool set |

Imaging Modes and Processing:

Broadband, multifrequency imaging:
2D / Tissue Harmonic Imaging / M-mode
Velocity Color Doppler / Color Power Doppler
PW, PW Tissue Doppler and CW

Image processing:

- SonoMB™ compound imaging capability
- SonoRES™ image enhancement capability
- Dual imaging
- Duplex imaging
- 2x pan/zoom capability
- Dynamic range and gain

Transducers:

Broadband and multifrequency:
Linear Array, Curved Array, Phased Array, Multiplane TEE and Micro-Convex
Single frequency:
Cardiac Static Pencil

User Interface and Remappable Controls:

- Softkeys to drive advanced features
- Delta key: user-assigned functions for increased ease of use
- Alphanumeric QWERTY keyboard
- Track pad with select key for easy operation and navigation
- Doppler/M-mode controls: angle, steer, scale, baseline, gain and volume
- Image acquisition keys: review, report, VCR, Clip Store, DVD, save

Application Specific Calculations:

OB/Gyn/Fertility:

Diameter/ellipse measurements, volume, six follicle measurements, estimated fetal weight, established due date, gestational age, last menstrual period, growth charts, user-defined tables, multiple user-selectable authors, ratios, amniotic fluid index, patient report

Vascular:

Diameter/ellipse/trace measurements, volume, volume flow, percent diameter and area reduction, Lt/Rt CCA, ICA, ECA, ICA/CCA ratio, time average mean (TAM), peak trace, ICA/CCA ratio, angle correction, patient report

IMT (Intima Media Thickness):

SonoCalc® IMT software – automatic edge detection with mean and maximum thickness reporting

Cardiac:

Complete cardiac calculations package and patient report including: ventricular, aortic and atrial measurements; ejection fraction, volume measurements, Simpson's rule, continuity equation, pressure half-time and cardiac output

Transcranial Doppler (TCD):

Complete TCD package including Time Average Peak (TAP)

Onboard Image and Clip Storage/Review:

Up to 4GB Flashcard storage capability
Potential to store 40,000 images or 700 2-second clips
Clip Store via ECG gated (up to 10 beats) or time-based (up to 6 seconds)
digital image acquisition
Cine review up to 220 frame-by-frame images



©2007 SonoSite, Inc. All rights reserved. Subject to change. MKT00766 Rev G/3.4 4-07

DICOM is the registered trademark of the National Electrical Manufacturers Association for its standards publications relating to digital communications of medical information.

External Data Management or Wireless:

DICOM® Image Management (TCP/IP)

- Print and Store
- Modality Work List

SonoROAM™ True Mobility wireless image transfer, 802.11b

PC Workstation Image Management (TCP/IP, USB or Flashcard reader)

- SiteLink™ Image Manager – allows transfer, archiving, viewing and printing of high resolution bitmap images/clips, and batch compression to JPEG on PCs

Measurement Tools, Pictograms and Annotations:

2D

- Distance calipers
- Ellipse and manual trace

Doppler

- Velocity measurements
- Pressure half time
- Volume flow calculation

M-mode

- Distance and time measurements
- Heart rate calculation

User-selectable text and pictograms

User-defined, application-specific annotations

Biopsy guidelines

External Video and Audio (requires an MDS, MDS Lite or separate minidock):

- S-video (in/out) to VCR or DVD for record and playback
- RGB or DVI output to external LCD display
- Composite video output (NTSC/PAL) to VCR, video printer or external LCD display
- Audio output
- Integrated speakers
- SonoROAM™ True Mobility wireless data transfer

Power Supply:

System operates via battery or AC power

Rechargeable lithium-ion battery

AC: universal power adapter, 100-240 VAC, 50/60 Hz input, 15 VDC output

Mobile Docking Stations and Peripherals:

MDSe – Convenient Workstation:

- Storage for fully integrated printer, VCR and/or DVD
- Transducer holder and storage
- Optional Triple Transducer Connect allows the user to quickly activate transducers electronically
- Optional foot switch
- Optional 15" (38 cm) (diagonal) DVI monitor

MDS Lite – Convenient Workstation:

- Storage for fully integrated printer, VCR or DVD
- Transducer holder and storage
- Optional Triple Transducer Connect allows the user to quickly activate transducers electronically
- Optional foot switch

Printers: Medical-grade black and white or color

External storage devices: Medical-grade VCR or DVD

ECG module: 3-lead ECG – works with standard ECG leads and electrodes



WORLDWIDE HEADQUARTERS

SonoSite, Inc., 21919 30th Drive SE, Bothell, WA 98021-3904

Tel: (425) 951-1200 or (877) 657-8050 Fax: (425) 951-6800 E-mail: admin@sonosite.com

INTERNATIONAL HEADQUARTERS

SonoSite Ltd., Alexander House, 40A Wilbury Way, Hitchin, Herts SG4 0AP, United Kingdom

Tel: +44 (0)1462 444800 Fax: +44 (0)1462 444801 E-mail: europe@sonosite.com

SonoSite Worldwide Offices

SonoSite Australasia Pty Ltd – Australia 1-300-663-516

– New Zealand 0-800-888-204

SonoSite KK - Japan 81-3-5304-5337

SonoSite SARL - France 33-1-69-18-96-30

SonoSite - Germany 49-91-31-97-79-29-0

SonoSite - India Liaison Office 91-124-4028888

SonoSite Iberica SL - Spain 34-91-640-49-11

SonoSite Ltd - China - Shanghai 86-21-523-966-93

SonoSite Canada Inc. - Canada 1-888-554-5502